



PLANNING DEVELOPMENT MANAGEMENT COMMITTEE



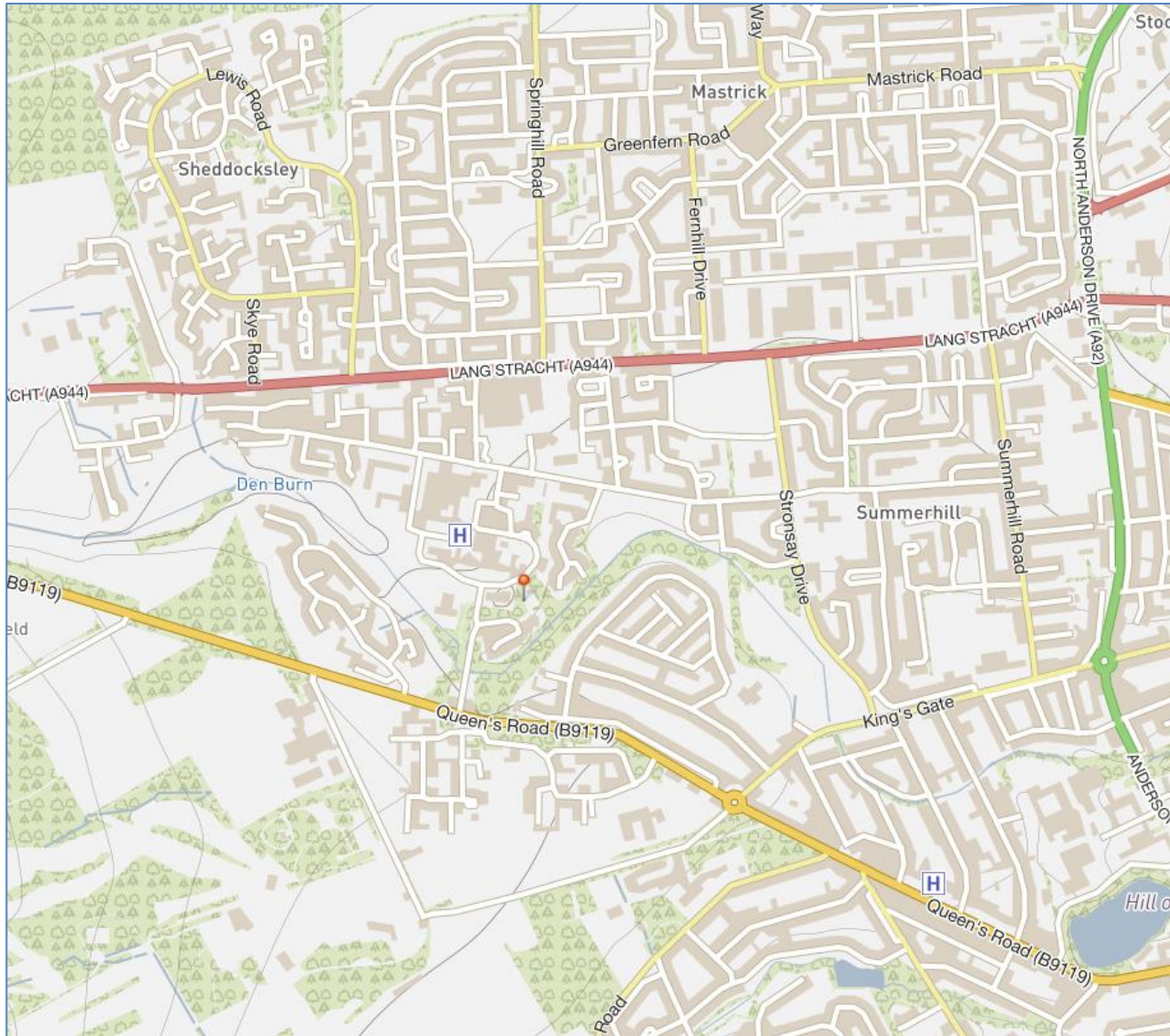
20 May 2021

Formation of access, parking area and
covered bike shed for allotments with
associated works

Land North of 15 Craighden, Aberdeen

Application reference: 210283/DPP

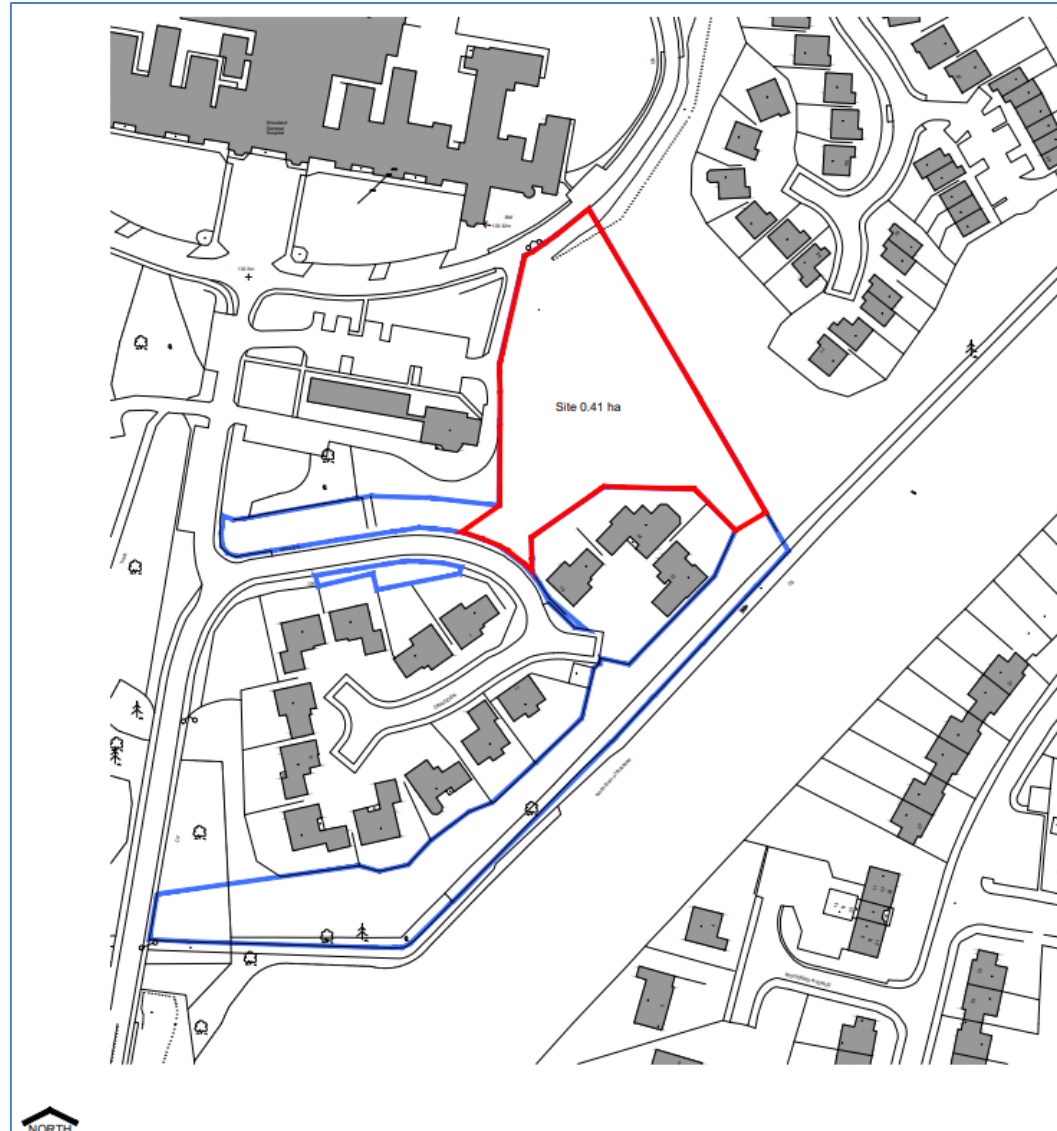
Site Location



Site Location



Site Location



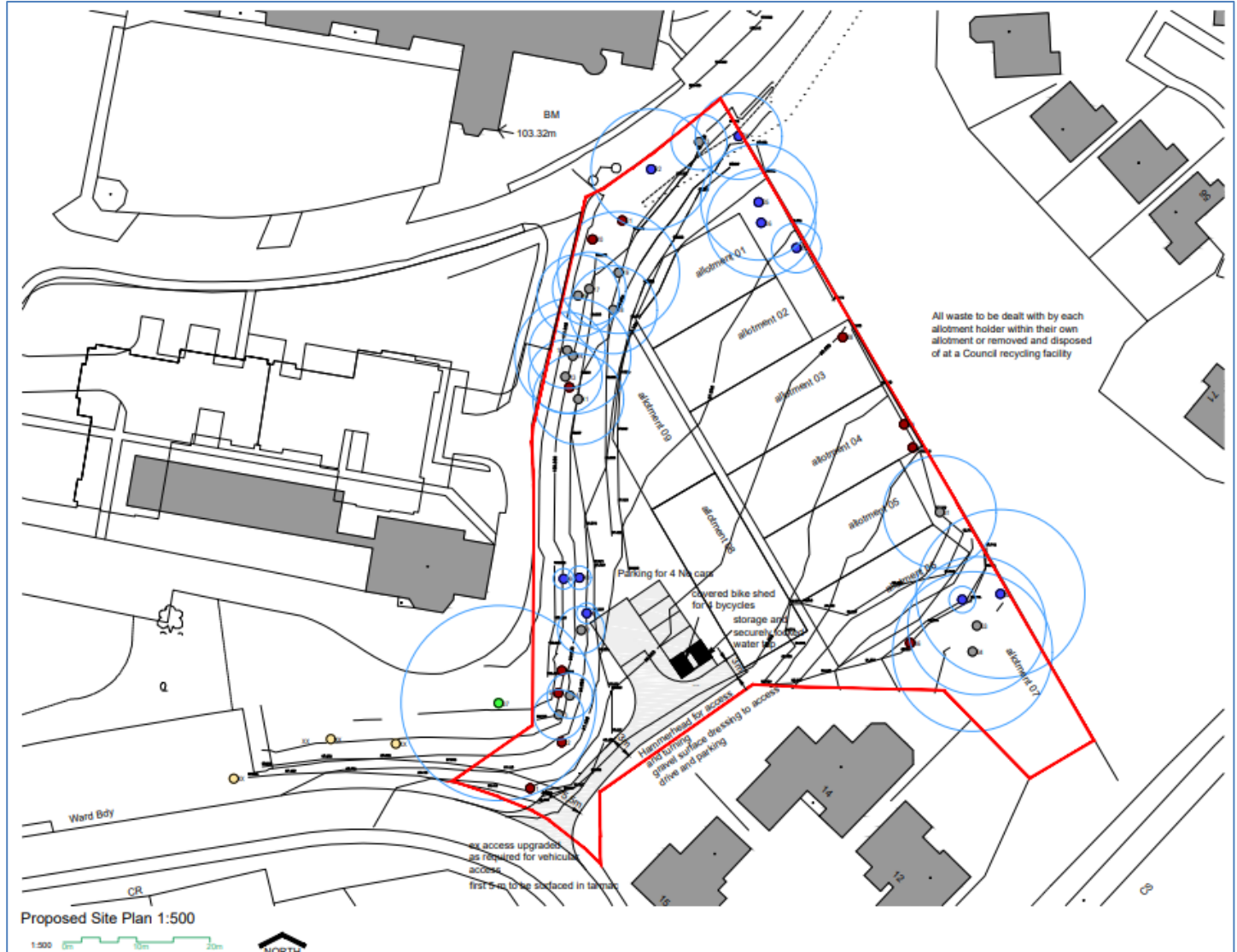
Site Location



Existing Site Plan



Proposed Site Plan



Proposed Bike Store

Store Construction Specification

Horizontal clad timber fence to cycle store.

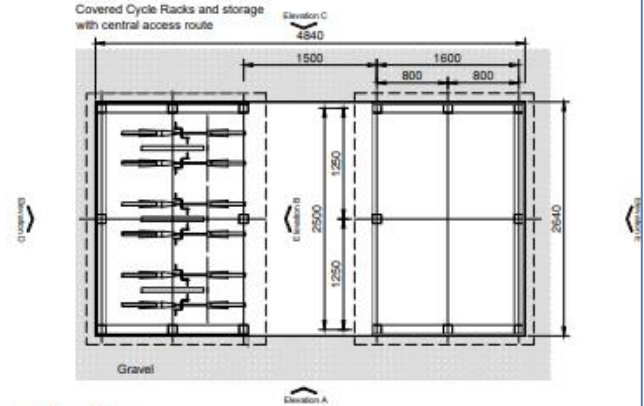
100mm square posts with 22x140mm horizontal fencing painted dark green. All elements screwed together with ss screws.

All timber to be pressure treated and suitable for external situation.

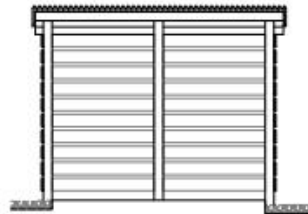
Timber posts to be embedded in suitable concrete footing of post mix concrete.

Stainless steel Sheffield cycle stands fitted to concrete slab within covered cycle store areas as indicated on plan.

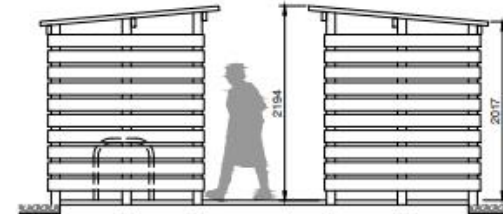
Roof to be corrugated fibre cement sheeting (black) fixed with proprietary fixings to 100x50mm treated timber purlins spanning between timber posts and centre timber.



Store Plan 1:50



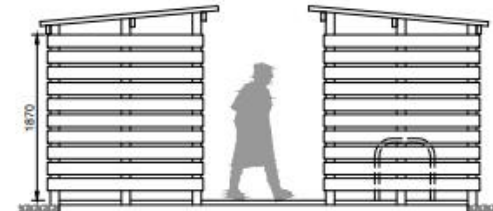
Elevation B 1:50



Elevation A - South East 1:50



Elevation D South West 1:50
Elevation E North East 1:50



Elevation C North West 1:50

Site Photo

Proposed Access



Site Photo

Looking north east



Site Photo

Looking north



Site Photo

Looking towards western boundary



Site Photo

Looking south towards access and 15 Craighden



Site Photo

Looking south west towards 14 and 15 Craighden



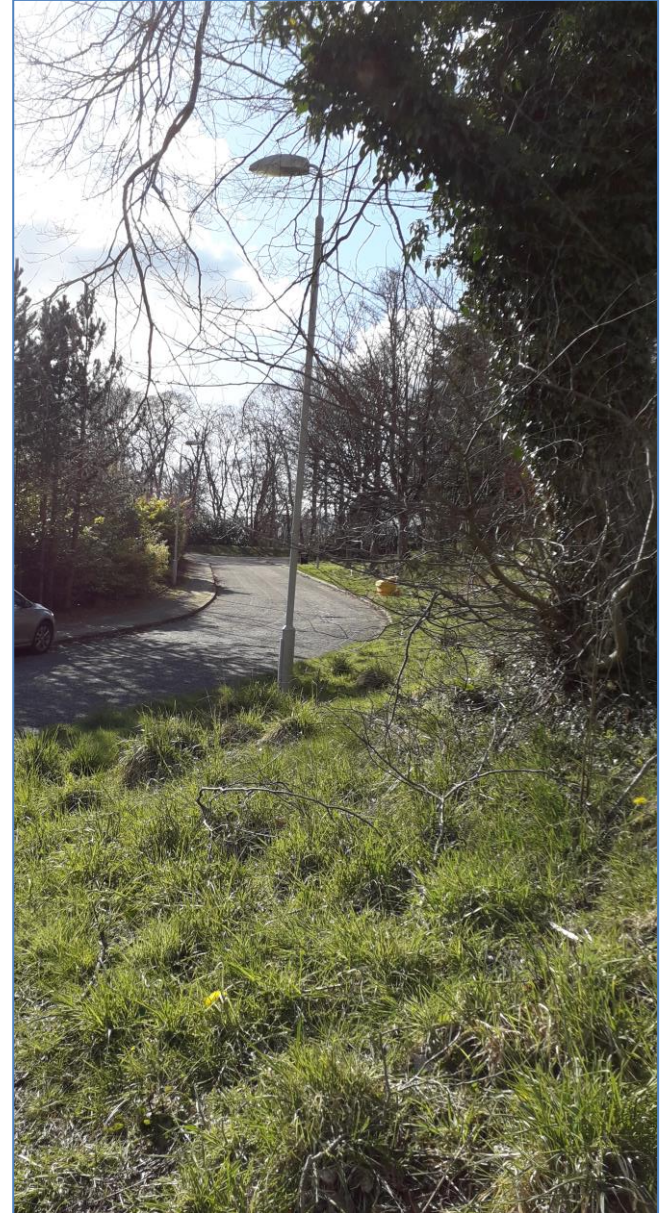


Site Photo

Public Road



Looking south east



Looking west

